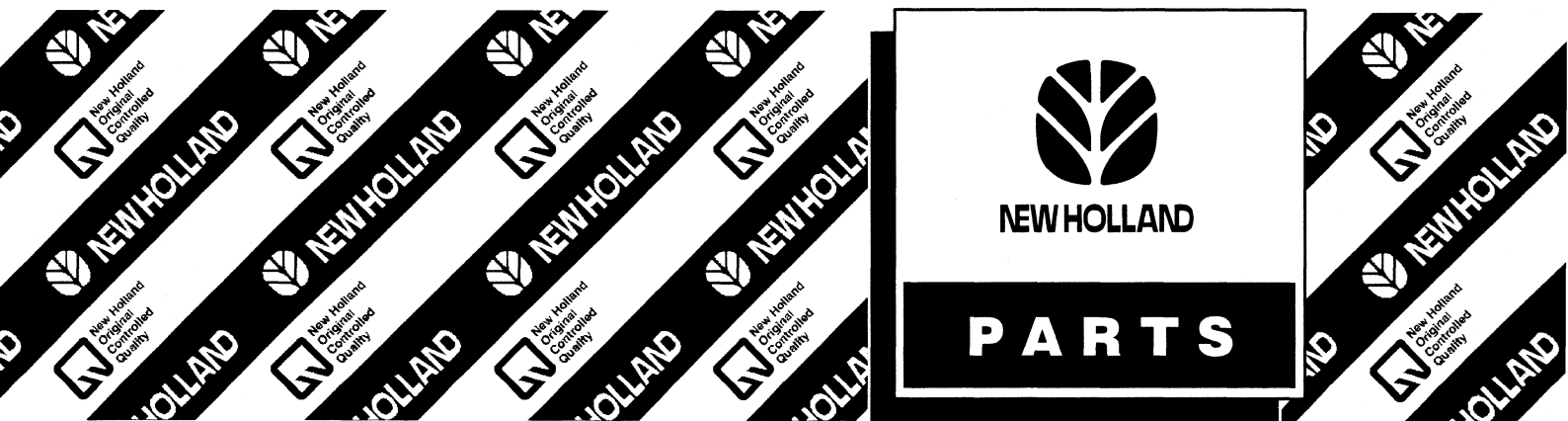


NEW HOLLAND

K-24

SERVICE PARTS CATALOG



GENERAL INFORMATION

1. Whenever the terms left and right are used, it should be understood to mean from a position facing in direction of travel.
2. Throughout this manual you find common hardware not illustrated, but listed in the description column. The service part immediately preceding a hardware listing is the part using these particular items for mounting purposes. This hardware is not included with the service part or assembly when ordered as a replacement.
3. New Holland North America, Inc. is continually striving to improve its products. We must, therefore, reserve the right to make improvements or changes when it becomes practical and possible to do so, without incurring any obligation to make changes or additions to the equipment sold previously.

ALWAYS USE GENUINE NEW HOLLAND PARTS

**NEW HOLLAND NORTH AMERICA, INC., 500 DILLER AVENUE,
NEW HOLLAND, PA 17557**



TABLE OF CONTENTS

01.01		MAIN FRAME, SPINNER & BASKET
01.02		LID, HEAT ELEMENT, MOTOR & ELECTRICAL
01.03		DECALS
02.01		HOUSING & DRYER DRIVE
02.02		CONTROL BOX & CABLES
02.03	1	CONTROL PANEL ELECTRICAL COMPONENTS, BSN 898359, K-24
02.03	2	CONTROL PANEL ELECTRICAL COMPONENTS, ASN 898359, K-24
02.04		UNHEATED DRYER COVER
02.05		STEAM-HEATED DRYER & COVER
02.06		ELECTRICALLY-HEATED DRYER & COVER
02.07		DECALS
03.01		HOUSING & DRYER DRIVE
03.02		CONTROL BOX & CABLES
03.03	1	CONTROL PANEL ELECTRICAL COMPONENTS, USED ON K-90 BSN 897094; K-90E BSN 886579; K-94 BSN 883813
03.03	2	CONTROL PANEL ELECTRICAL COMPONENTS, USED ON K-90 ASN 897093; K-90E & ASN 886578; K-94 ASN 883812
03.04		UNHEATED DRYER COVER
03.05		STEAM-HEATED DRYER & COVER
03.06		ELECTRICALLY-HEATED DRYER & COVER
03.07		DECALS



- 1 Position of the "Figure" on the machine.
- 2 Reference - Figure call-out of the part number.
- 3 Parts supplied in repair kits per symbol reference.



- 4 01.14.0-2 Parts illustrated on the Page or in the Figure indicated, or calls for Variations or Details. Indicates components shown in detail elsewhere in the catalog under the figure number shown.

- 5 Technical specifications relating to the Part indicated.

- 6 1 Item Includes References noted in description.

- 7 Orientation. (Arrow indicates front of the machine.) 

- 8 Figure description.

- 9 General information of the figure.

- 10 Assembly code.

- 11 Sequence code within the assembly.

- 12 Page number within the sequence code.

- 13 Date of printing or updating of page (month-year).

- 14 Note - Relating to the Part Number. There is a key to symbols and abbreviations at the bottom of the text page.

- 15 Non-serviced parts.

- 16 Further description of the part to help confirm identification.

- 17 Not available as service part in this market.

- 18 Part Number.

- 19 Year

Before 06/85 = Part valid for production 06/85 and before
 From 07/85 = Part valid for production from 07/85 and after

Serial Number

BSN 31011913 = Part valid for serial number 31011913 and below

ASN 31011914 = Part valid for serial number 31011914 and above

Modification

→ C 0201 = Part valid UNTIL 0201 change.

→ D 0300 = Part valid FROM 0300 change.

→ F 0202 = Part valid FROM Serial N..... to Serial N.....

Implementation of change. Serial number from which the change starts. The numbers are indicated on the identification plate of the model.

E.g.: D0300 Serial N 2503001 means that the part has been installed "From" serial number 2503001. Consequently, the parts marked by C0201, were installed "UP TO" serial number 2501999.

See code table.

- 20 Total Quantity of the Part referred to in the page. The quantity can be replaced by the following indications:

M = supplied in metres. AR = quantity as required.

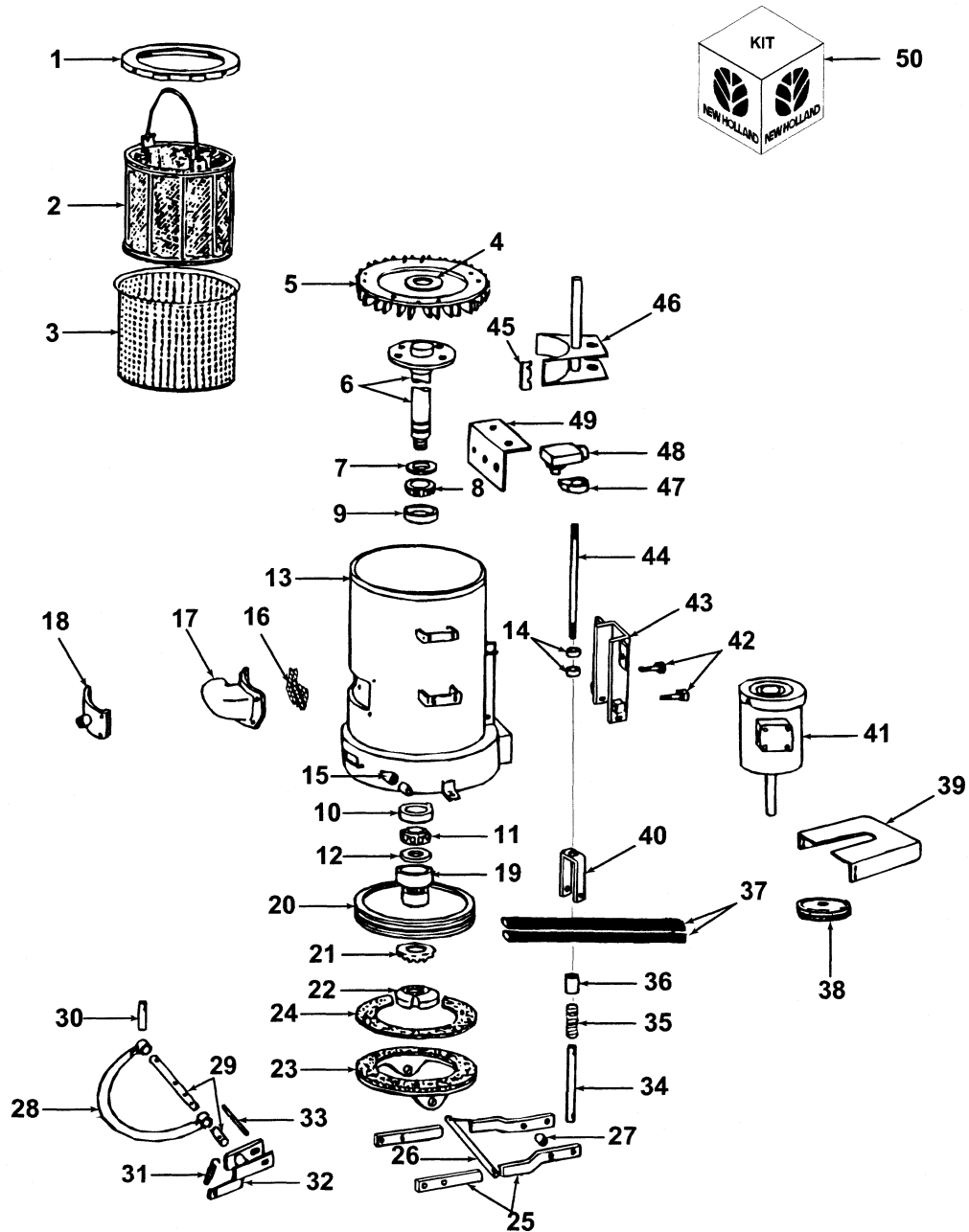
- 21 Part Description.

- 22 Footnote references.

- 23 Figure notes.

- 24 Model number(s).

HOUSING & DRYER DRIVE



HOUSING & DRYER DRIVE

REF	FN	PART NUMBER	YR/SN	QTY	DESCRIPTION
1		147097		1	Ring
		690341		4	Screw, Self-Tapping, Flg, USR, 5/16"-18 x 5/8"
2		100192		AR	Basket, Carbon Steel, 4 x 4
2		101179		AR	Basket, Carbon Steel, 8 x 8
2		101180		AR	Basket, Carbon Steel, 10 x 10
2		100194		AR	Basket, Carbon Steel, 16 x 16
2		100195		AR	Basket, Stainless, 4 x 4
2		101183		AR	Basket, Stainless, 8 x 8
2		101184		AR	Basket, Stainless, 10 x 10
2		101185		AR	Basket, Stainless, 16 x 16
2		133587		AR	Basket, Polypropylene, 1/8" Perforations
2		9616651		AR	Basket, Polypropylene, 3/16" Perforations
2		9863898		AR	Basket, Polypropylene, #40 Mesh Stainless Steel Liner, .015" Opening
3		719742		1	Spinner
		9706729		4	Screw, Cap, HH, G5, 7/16"-14 x 1"
4		101367		AR	Shim, .060" Thk
5		101214		1	Turbine
		88574		3	Screw, Cap, HH, G5, 5/16"-18 x 1/2"
		80681		3	Washer, Lock, 5/16"
6		101208		1	Shaft, Drive
		280580		4	Cap, HH, G5, 5/8"-11 x 1"
7		101263		1	Flinger, Labyrinth
8		101259		1	Cone, Tapered Roller Bearing, Timken #355
9		101258		1	Cup, Tapered Roller Bearing, Timken #354
10		28656		1	Cup, Tapered Roller Bearing, Timken #332
11		101257		1	Cone, Tapered Roller Bearing, Timken #337
12		101260		1	Seal, Oil
13		254322		1	Housing, Includes: (2) Ref. 14 & (2) Ref. 15
		84859		1	Nipple, Pipe, 1/8" x 6"
		91932		1	Coupling, Pipe, 1/8"
		80710		1	Fitting, Nipple, Lube, 1/8"
14		27767		2	Bushing
15		34235		2	Bushing
16		101253		1	Screen
17		101272		1	Elbow, Exhaust
		280519		4	Screw, Self-tapping, HH, GB, 5/16" x 1"

K24

HOUSING & DRYER DRIVE

REF	FN	PART NUMBER	YR/SN	QTY	DESCRIPTION
18	1	218522		1	Plate
		280519		4	Screw, Self-tapping, Type B, HH, 5/16" x 1"
19		101266		1	Sleeve, Bearing
20		788387		1	Sheave, Driven
		788386		1	Key, Sheave
21		28581		1	Washer
22		101262		1	Nut, Lock, Bearing
		80426		1	Screw, Set, HS, Cup Pt, 3/8"-16 x 5/16"
		26650		1	Plug, Locking, Copper, .297" ID x 1/8" Thk
23		101245		1	Shoe, Brake, Includes: Ref. 24
24		9601493		1	Lining, Brake
		80245		7	Rivet, Flat Hd, Tubular, 3/16" x 1/2"
25		147104		2	Link
26		101270		1	Pin, Brake Pivot
		80755		2	Pin, Split Cotter, 1/8" x 1"
27		143274		1	Spacer
		87936		1	Screw, Cap, HH, G5, 3/8"-16 x 2-1/2"
		88902		1	Nut, Lock, GC, 3/8"-16
28		101242		1	Lever
		87414		2	Nipple, Lube, Straight, 1/4"-28
29		101269		1	Shaft, Brake Lever
30		87718		4	Pin, Roll, 1/4" x 2"
31		676397		1	Spring
32		101238		1	Yoke, Brake
33		101271		1	Pin, Yoke Pivot
		80755		2	Pin, Split Cotter, 1/8" x 1"
34		147102		1	Shaft
		87949		1	Pin, Roll, 3/8" x 1-3/4"
35		6132		1	Spring
36		101248		1	Guard, Spring Interlock
37		849887		1	V-Belts, Matched Set of (2)
38		147108		1	Sheave, Motor
		88528		2	Screw, Set, Sq Hd, Knurled Pt, 5/16"-18 x 3/8"
39		147111		1	Shield, Motor Sheave
		80664		2	Washer, 5/16"
		80681		2	Washer, Lock, 5/16"

(1) Optional as a Service Part

K24

HOUSING & DRYER DRIVE

REF	FN	PART NUMBER	YR/SN	QTY	DESCRIPTION
40		9635082		2	Nut, G5, 5/16"-18
		147100		1	Clevis
		9706689		1	Screw, Cap, HH, G5, 3/8"-16 x 1-3/4"
		88902		1	Nut, Lock, GC, 3/8"-16
41		242216		1	Motor, Electric, 1 HP, 208/230/460 Volt, 3-phase, Totally Enclosed
41		700283		1	Motor, Electric, 1 HP, 200 Volt, 3-phase, Totally Enclosed
41		242218		1	Motor, Electric, 1 HP, 380 Volt, 50 HZ, 3-phase, Totally Enclosed
41		242214		1	Motor, Electric, 1 HP, 575 Volt, 3-phase, Totally Enclosed
		88992		4	Bolt, Carriage, Short Neck, G5, 5/16"-18 x 1"
		80664		4	Washer, 5/16"
		80681		4	Washer, Lock, 5/16"
		9635082		4	Nut, G5, 5/16"-18
42		86512813		2	Screw, Set, Sq Hd, Cup Pt, 3/8" x 3"
		9628503		2	Nut, G5, 3/8"-16
43		242980		1	Channel
		88206		4	Screw, Cap, HH, G5, 3/8"-16 x 1"
		80702		4	Washer, 3/8"
		80680		4	Washer, Lock, 3/8"
44		147098		1	Rod
		9638005		1	Nut, Jam, G2, 1/2"-13
45		680133		AR	Shim
46		147092		1	Pivot
46		693953		AR	Flip Up Hinge
		9635884		4	Screw, Cap, HH, G5, 5/16"-18 x 1"
		87362		4	Washer, SAE, 5/16"
		80681		4	Washer, Lock, 5/16"
		9635082		4	Nut, G5, 5/16"-18
47		101268		1	Stop, Limit
		81761		1	Screw, Set, Sq Hd, Cup Pt, 1/4"-20 x 5/16"
48		101304		1	Switch, Limit Safety, Includes: Cover & Gasket
		88363		1	Screw, Fillister Hd, G2, #6 x 1-1/4"
49		699767		1	Mount
		88565		2	Screw, HWH, #8-32 x 5/8"

K24

02.01

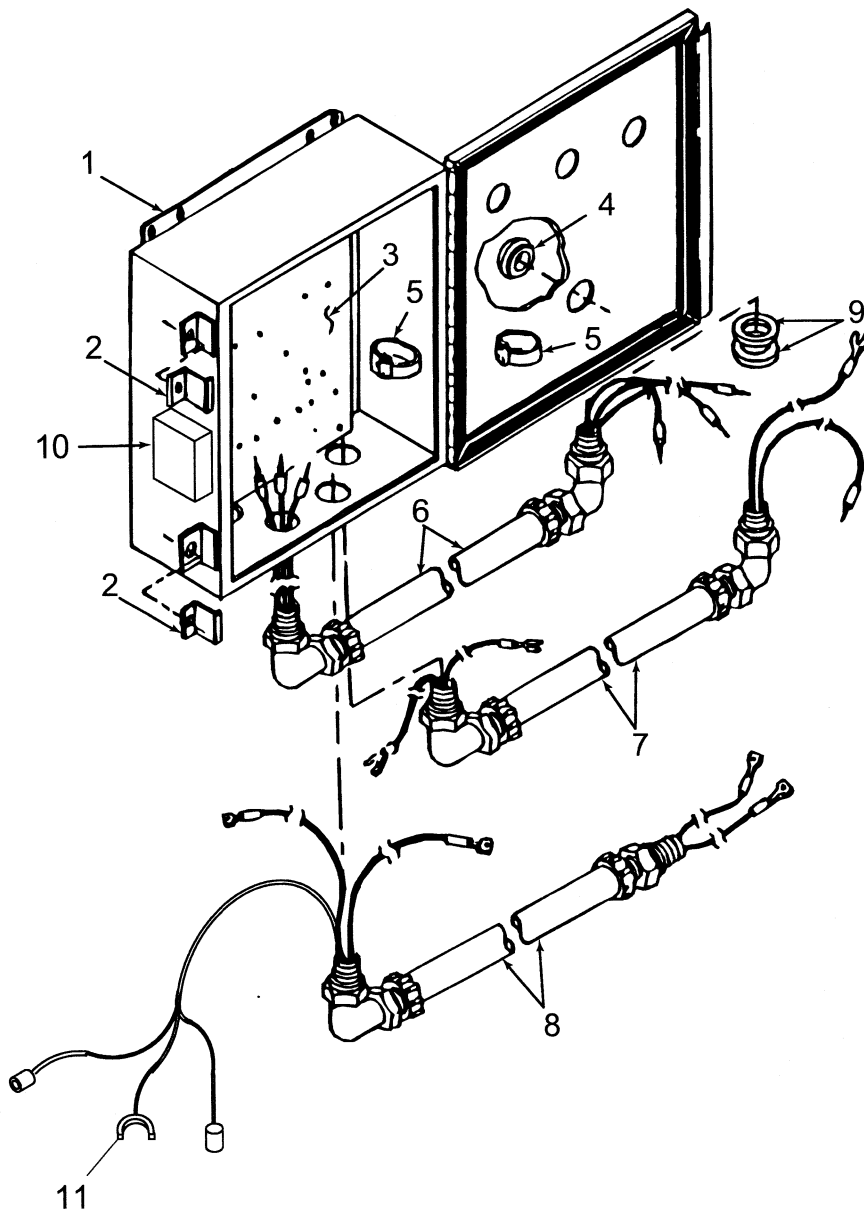
p4

02/03

HOUSING & DRYER DRIVE

REF	FN	PART NUMBER	YR/SN	QTY	DESCRIPTION
50		87812		2	Washer, Lock, #8
		87653		2	Nut, #8-32
		204815		AR	Kit, Bearing Replacement, Includes: Ref. 7 - 12, 19,
					21 & 22 & Associated Hardware
					K24

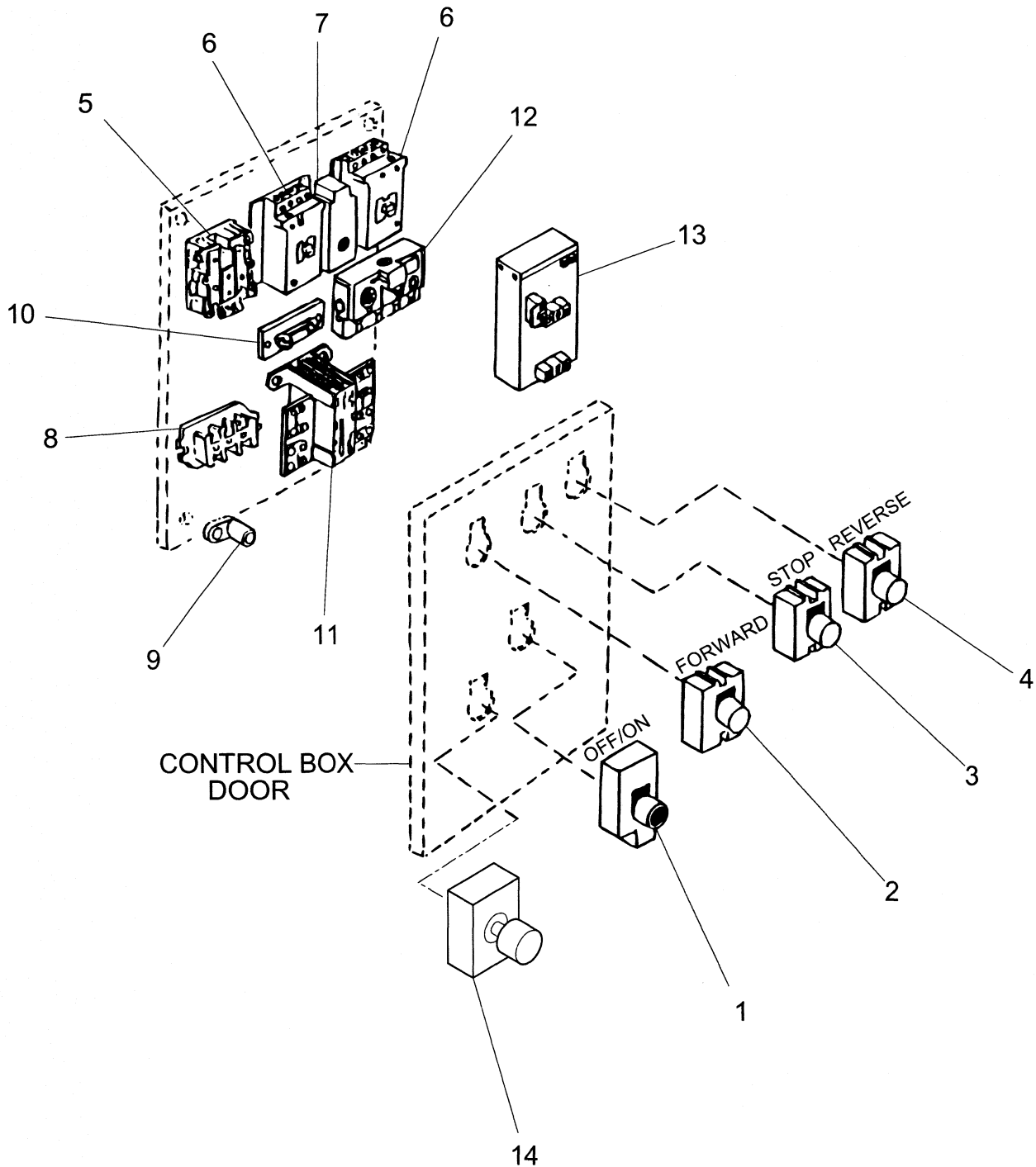
CONTROL BOX & CABLES



CONTROL BOX & CABLES

REF	FN	PART NUMBER	YR/SN	QTY	DESCRIPTION
1		855058		1	Box & Lid, Control, Includes: Ref. 2
		80701		4	Washer, 1/4"
		80682		4	Washer, Lock, 1/4"
2		NSS		2	Clamp, Door
3		855056		1	Plate, Mounting, Controls, Refer to Separate Breakdown for Electrical Components
4		855070		1	Plug, Panel, 7/8", Used to Plug Hole on Non-heated Units
5		855055		2	Grip, Wire
6		9609479		1	Cable, Motor
6		9614995		1	Cable, Motor, Soft Start Controls
7		855054		1	Cable, Switch
8		263061		1	Cable, Heater, Used W/ Electrically Heated Dryers Only
9		101319		1	Washer, Reducing, Motor Cable
		9707580		4	Screw, Cap, HH, G5, 1/4"-20 x 3/4"
		7770		4	Nut, G5, 1/4"-20
10		9862265		1	Timer, Kit
11		86529636		1	Sensor, Included in Temperature Kit 86529635
					K24

CONTROL PANEL ELECTRICAL COMPONENTS, BSN 898359, K-24



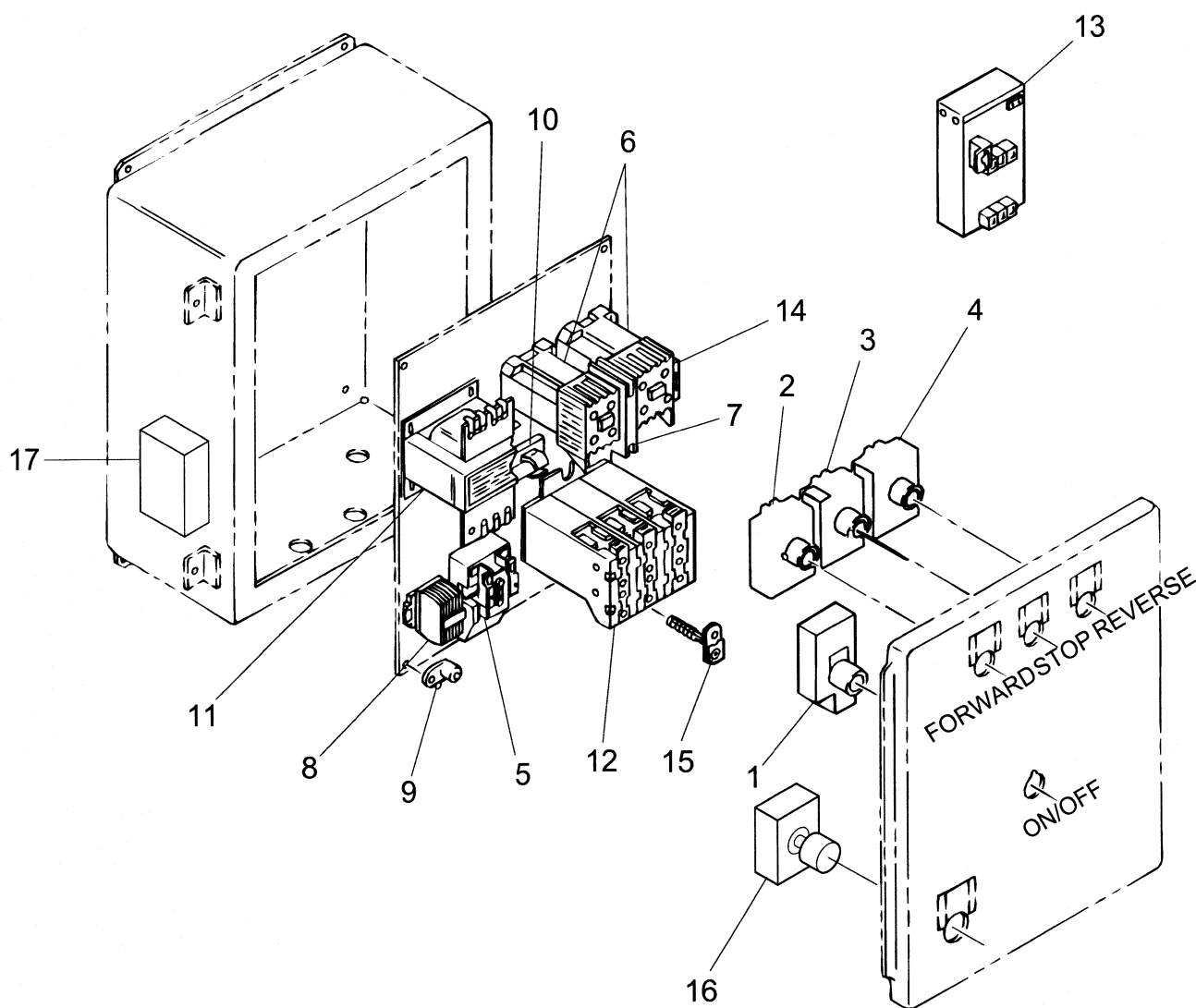
CONTROL PANEL ELECTRICAL COMPONENTS, BSN 898359, K-24

REF	FN	PART NUMBER	YR/SN	QTY	DESCRIPTION
1	1	855069		1	Switch, Push-Button, Off/On
2		855066		1	Switch, Push-Button, Forward
3		855067		1	Switch, Push-Button, Stop
4		855068		1	Switch, Push-Button, Reverse
5	1	855052		1	Relay, Power
		281020		2	Screw, Self-Tapping, Pan Hd, #8 x 3/4"
6		855050		2	Contactor
		281020		2	Screw, Self-Tapping, Pan Hd, #8 x 3/4"
7		855051		1	Contactor, Interlock
		280528		1	Screw, Self-Tapping, Plated, Oval Hd., #8 x 3/4"
8		254321		1	Block, Terminal
		87654		2	Screw, Self-Tapping, Rd Hd, #8 x 1/2"
9		141360		1	Lug, Ground
		86544338		1	Washer, Lock, Int-Ext T, #10
10		593526		1	Block, Fuse
		262635		1	Fuse, 1 Amp
		281076		1	Screw, Self-Tapping, Oval Hd, #6 x 5/8"
11		855042		1	Transformer, Control, 208/380 VAC
11		855043		1	Transformer, Control, 240/480/600 VAC
12		855061		1	Relay, Overload, Adjusting Range, 440 Volt, 1.4-2.2 Amp
12		9621678		1	Relay, Overload, Class 20, W/Soft Start Controls
13		86507411		1	Control, Soft Start, 200/230 VAC
13		86507412		1	Control, Soft Start, 460/575 VAC
14	1	86529636		1	Control, Temperature, Includes Sensor 86529635

(1) Electrically Heated Units Only

K24

CONTROL PANEL ELECTRICAL COMPONENTS, ASN 898359, K-24



CONTROL PANEL ELECTRICAL COMPONENTS, ASN 898359, K-24

REF	FN	PART NUMBER	YR/SN	QTY	DESCRIPTION
1	1	855069		1	Switch, Push-Button, Off/On
2		855066		1	Switch, Push-Button, Forward
3		855067		1	Switch, Push-Button, Stop
4		855068		1	Switch, Push-Button, Reverse
5	1	855052		1	Relay, Power
		281020		2	Screw, Self-Tapping, Pan Hd, #8 x 3/4"
6	2	86508117		2	Contactor
		281020		2	Screw, Self-Tapping, Pan Hd, #8 x 3/4"
6	3	86586797		2	Contactor
7	2	86508116		1	Interlock
7	3	86586798		1	Interlock
		280528		1	Screw, Self-Tapping, Plated, Oval Hd., #8 x 3/4"
8		254321		1	Block, Terminal
		87654		2	Screw, Self-Tapping, Rd Hd, #8 x 1/2"
9		141360		1	Lug, Ground
		86544338		1	Washer, Lock, Int-Ext T, #10
10		593526		1	Block, Fuse
		262635		1	Fuse, 1 Amp
		281076		1	Screw, Self-Tapping, Oval Hd, #6 x 5/8"
11		855042		1	Transformer, Control, 208/380 VAC
11		855043		1	Transformer, Control, 240/480/600 VAC
12	2	86508118		1	Relay Overload
12	3	86586800		1	Relay Overload, 3 AMP
12	2	86586801		1	Relay Overload, 5 AMP
13		86624371		1	Control, Soft Start, 200/230 VAC
13		86624372		1	Control, Soft Start, 460/575 VAC
14	1,2	86508125		1	Contact, Auxiliary
14	1,3	86586799		2	Contact, Auxiliary
15	2	86508402		3	Heater, 1.42 Amp, for use W/575V Units
15	2	86508128		3	Heater, 1.71 Amp, for use W/380V & 460V Units
15	2	86545169		3	Heater, 2.07 Amp, for use W/380V & 460V Units
15	2	86508130		1	Heater, 3.64 Amp, for use W/208V & 230V Units
15	2	86545170		3	Heater, 4.0 Amp, for use W/208V & 230V Units
16		86529635		1	Control Temperature Kit, Includes Sensor 86529636

- (1) Used W/Electrically Heated Units Only
 (2) BSN 974956; K24
 (3) ASN 974957; K24

K24



02.03

2

p2

02/03

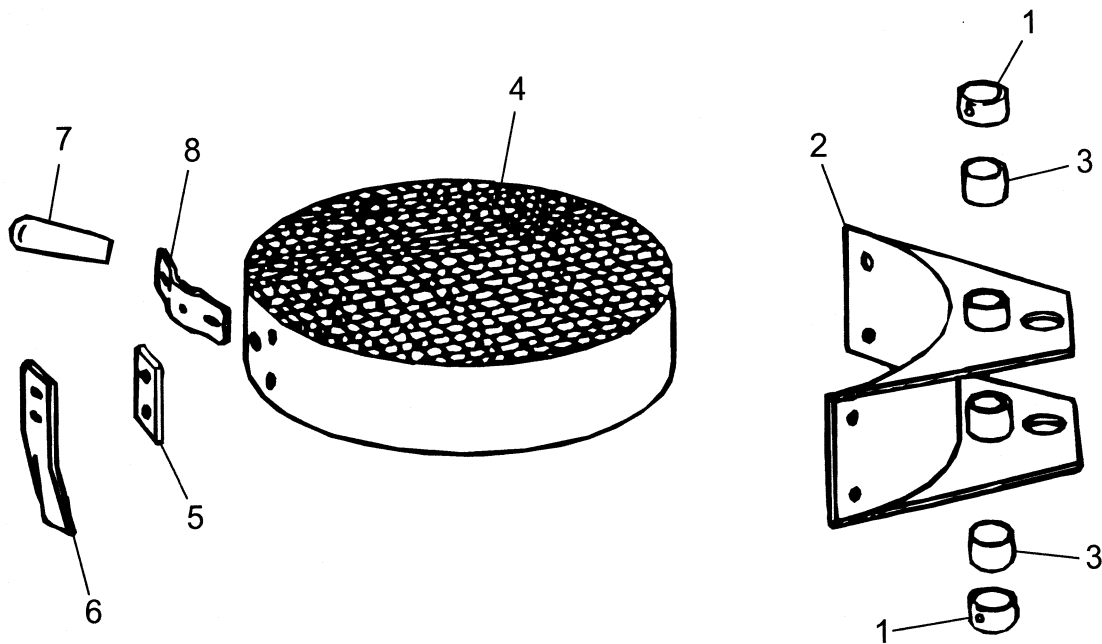
CONTROL PANEL ELECTRICAL COMPONENTS, ASN 898359, K-24

REF	FN	PART NUMBER	YR/SN	QTY	DESCRIPTION
-----	----	-------------	-------	-----	-------------

17	9863576	1	Control, Timer
----	---------	---	----------------

K24

UNHEATED DRYER COVER

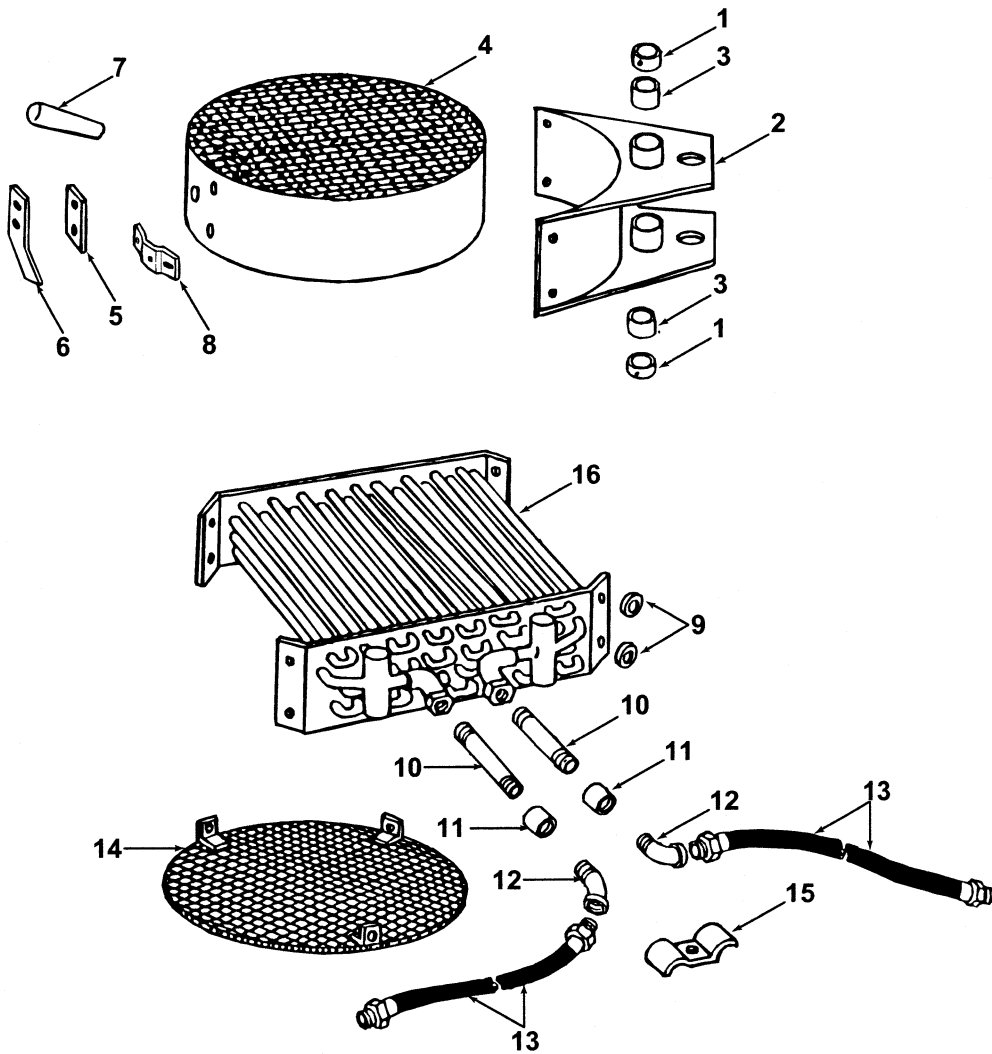


UNHEATED DRYER COVER

REF	FN	PART NUMBER	YR/SN	QTY	DESCRIPTION
1		13231		2	Collar, Set
		80429		2	Screw, Set, HS, Cup Pt, 5/16"-18 x 5/16"
2		147087		1	Pivot, Includes: Ref. 3
2		693949		AR	Flip Up Hinge
		271288		4	Screw, Cap, Flg Hd, USR, 5/16"-18 x 5/8"
		145458		4	Nut, Flg, USR, 5/16"-18
3		12431		2	Bushing
4		147084		1	Cover
5		147095		AR	Shim
6		147107		1	Clip, Spring
		9635884		2	Screw, Cap, HH, G5, 5/16"-18 x 1"
		80664		2	Washer, 5/16"
		80681		2	Washer, Lock, 5/16"
7		186610		1	Handle
		280615		1	Bolt, HH, Tap, G5, 1/2"-13 x 2-1/2"
		685896		1	Washer, Nylon, 1/2"
		9638005		1	Nut, Jam, G2, 1/2"-13
8		9805627		1	Bracket
		280327		2	Bolt, Carriage, G5, 5/16"-18 x 3/4"
		145458		2	Nut, Flg, USR, 5/16"-18
		80679		1	Washer, Lock, 1/2"

K24

STEAM-HEATED DRYER & COVER



STEAM-HEATED DRYER & COVER

REF	FN	PART NUMBER	YR/SN	QTY	DESCRIPTION
1		13231		2	Collar, Set
		80429		2	Screw, Set, HS, Cup Pt, 5/16"-18 x 5/16"
2		147087		1	Pivot, Includes: Ref. 3
		271288		4	Screw, Cap, Flg Hd, USR, 5/16"-18 x 5/8"
		145458		4	Nut, Flg, USR, 5/16"-18
2		693949		AR	Flip Up Hinge
		271288		4	Screw, Cap, Flg Hd, USR, 5/16"-18 x 5/8"
		145458		4	Nut, Flg, USR, 5/16"-18
3		12431		2	Bushing
4		147084		1	Cover
5		147095		AR	Shim
6		147107		1	Clip, Spring
		9635884		2	Screw, Cap, HH, G5, 5/16"-18 x 1"
		80702		2	Washer, 5/16"
		80681		2	Washer, Lock, 5/16"
7		186610		1	Handle
		280615		1	Bolt, HH, Tap, G5, 1/2"-13 x 2-1/2"
		685896		1	Washer, Nylon, 1/2"
		80679		1	Washer, Lock, 1/2"
		9638005		1	Nut, Jam, G2, 1/2"-13
8		9805627		1	Bracket
		280327		2	Bolt, Carriage, G5, 5/16"-18 x 3/4"
		145458		2	Nut, Flg, USR, 5/16"-18
9		709157		AR	Spacer
10		87741		2	Nipple, Pipe, 1/2" x 4"
11		88837		2	Coupling, 1/2"
12		88746		2	Elbow, Street, 1/2", 45°
13		101334		2	Hose
14		147138		1	Shield
		677808		3	Screw, Self Tapping, HWH, 1/4"-20 x 5/8"
15		207705		2	Clamp
		770983	Before 06/95	1	Bolt, Weld Nut
		88902		AR	Nut, Lock, GC, 3/8"-16
		80664	Before 06/95	2	Washer, 5/16"
		280431	Before 06/95	1	Nut, G5, 1/2"-13
		9638005	Before 06/95	1	Nut, Jam, G2, 1/2"-13
		80702	From 06/95	4	Washer, 3/8"

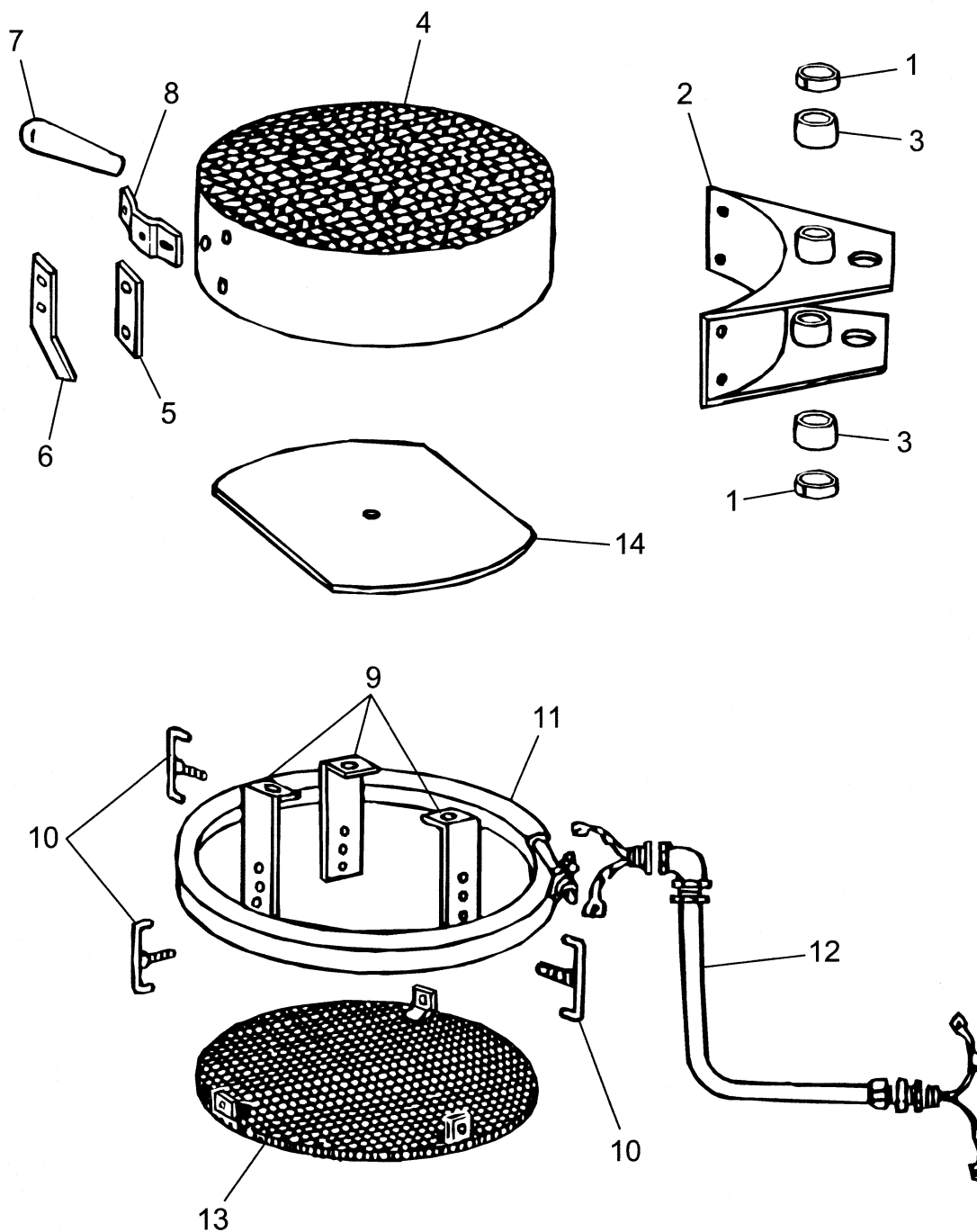
K24

STEAM-HEATED DRYER & COVER

REF	FN	PART NUMBER	YR/SN	QTY	DESCRIPTION
16		280626	From 06/95	1	Bolt, HH, Tap, G5, 3/8"-16 x 3"
		9628503	From 06/95	2	Nut, G5, 3/8"-16
		147126		1	Condenser
		523292		8	Screw, Cap, Flg, USR, 1/4"-20 x 3/4"
		523282		8	Nut, Flg, USR, 1/4"-20

K24

ELECTRICALLY-HEATED DRYER & COVER

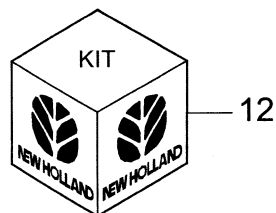
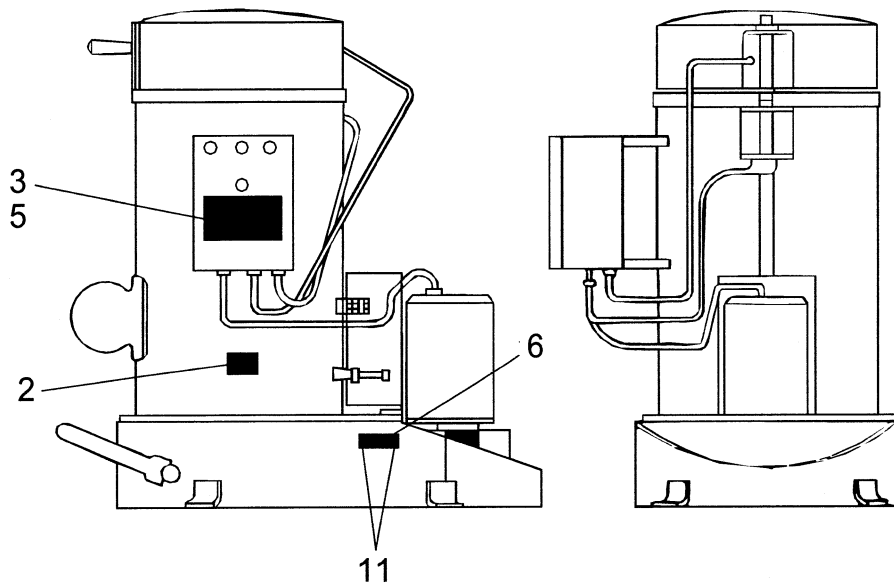
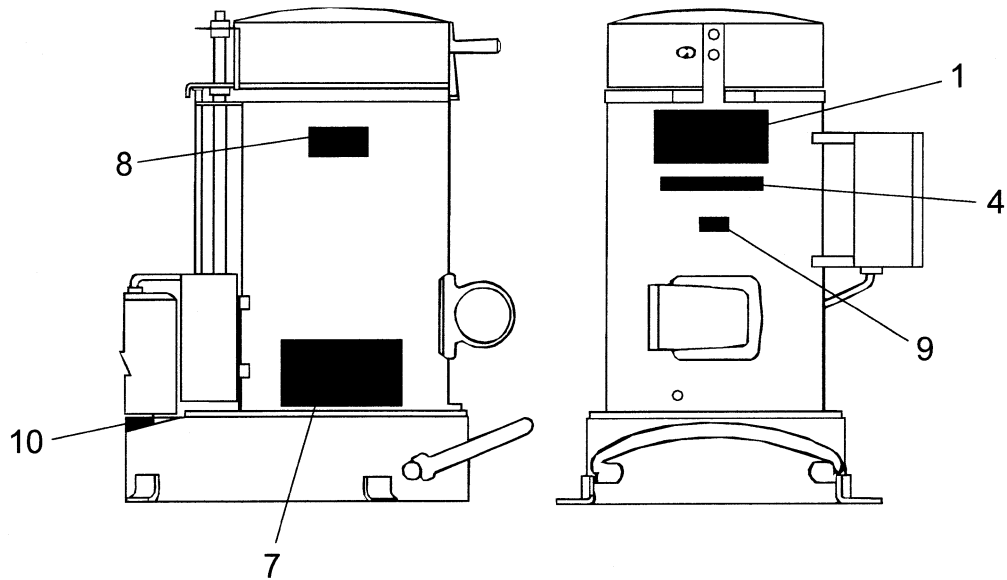


ELECTRICALLY-HEATED DRYER & COVER

REF	FN	PART NUMBER	YR/SN	QTY	DESCRIPTION
1		13231		2	Collar, Set
		80429		2	Screw, Set, HS, Cup Pt, 5/16"-18 x 5/16"
2		147087		1	Pivot, Includes: Ref. 3
		271288		4	Screw, Cap, Flg Hd, USR, 5/16"-18 x 5/8"
		145458		4	Nut, Flg, USR, 5/16"-18
2		693949		AR	Flip Up Hinge
		271288		4	Screw, Cap, Flg Hd, USR, 5/16"-18 x 5/8"
		145458		4	Nut, Flg, USR, 5/16"-18
3		12431		2	Bushing
4		147084		1	Cover
5		147095		AR	Shim
6		147107		1	Clip, Spring
		9635884		2	Screw, Cap, HH, G5, 5/16"-18 x 1"
		80664		2	Washer, 5/16"
		80681		2	Washer, Lock, 5/16"
7		186610		1	Handle
		280615		1	Bolt, HH, Tap, G5, 1/2"-13 x 2-1/2"
		685896		1	Washer, Nylon, 1/2"
		80679		1	Washer, Lock, 1/2"
		9638005		1	Nut, Jam, G2, 1/2"-13
8		9805627		1	Bracket
		280327		2	Bolt, Carriage, G5, 5/16"-18 x 3/4"
		145458		2	Nut, Flg, USR, 5/16"-18
9		704334		3	Bracket
		677808		3	Screw, Self Tapping, HWH, 1/4"-20 x 5/8"
10		704336		3	U- Clamp
		280129		3	Nut, Lock, Prevailing Torque, G8, 1/4"-20
11		263049		AR	Element, Heat, 208 & 240 Volt Rating, 3000/4000 Watts
11		849562		AR	Element, Heat, 208 Volt Rating, 4000 Watts
11		263050		AR	Element, Heat, 380 Volt Rating, 4000 Watts
11		263051		AR	Element, Heat, 480 Volt Rating, 4000 Watts
11		263054		AR	Element, Heat, 575 Volt Rating, 4000 Watts
12		263061		1	Conduit & Wire, Heater
13		147138		1	Shield
		677808		3	Screw, Self Tapping, HWH, 1/4"-20 x 5/8"
14		147131		1	Shield

K24

DECALS



**02.07**

p1

02/03

DECALS

REF	FN	PART NUMBER	YR/SN	QTY	DESCRIPTION
1		855053		1	Sign, Caution
2		145067		1	Sign, Patent
3		719836		1	Sign, Attention
4		388435		1	Sign, NH Yellow 16
5		782166		1	Sign, Warning, Inside Cover
6		NSS		1	Plate, Model/Serial
7		855047		1	Sign, Information
8		850252		1	Sign, Reconditioned
9		719740		1	Label, Underwriters
10		9609360		2	Sign, Warning
11		NSS		2	Screw, Self-Tapping, Brass, #4 x 1/4"
12		855017		1	Kit, Decal, Includes: Ref. 1 - 5, 7 & 10

K24